

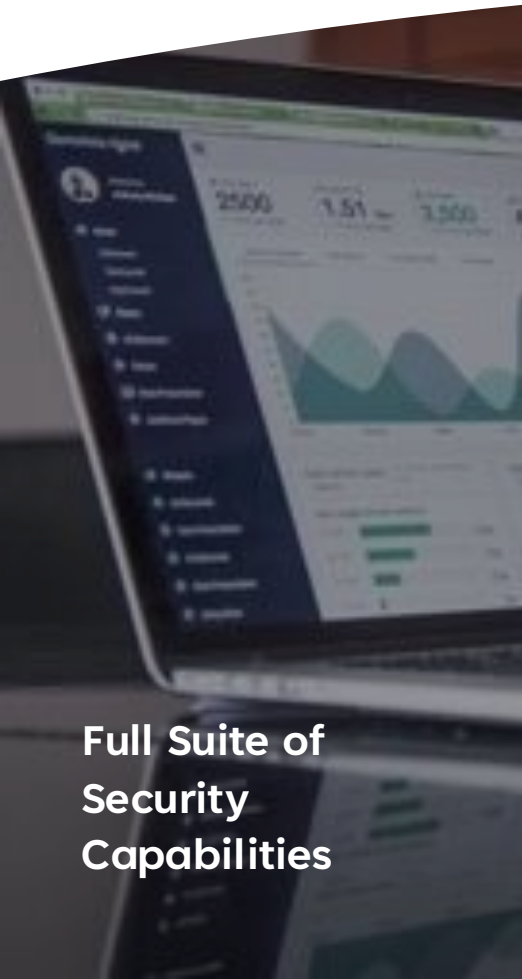


# Wipro Cyber Security & Risk Service

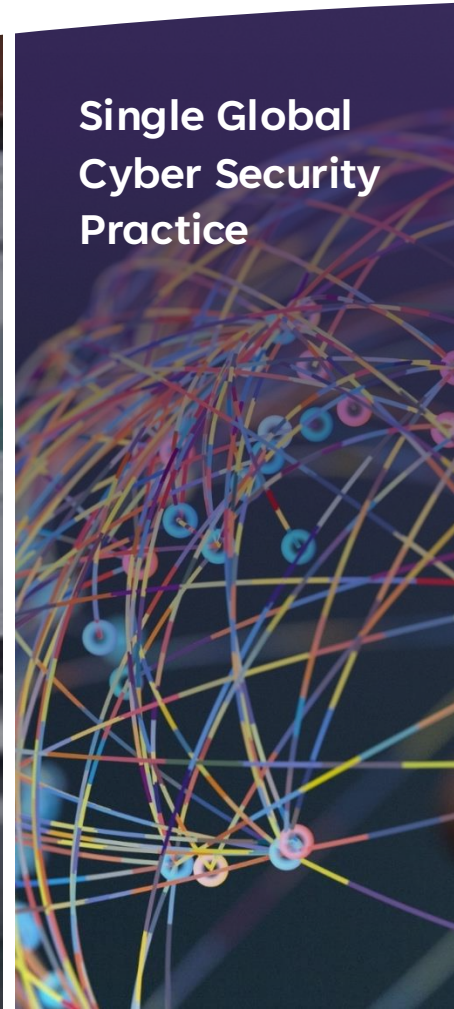
Enabling your transformation into a  
cyber-resilient business

2024

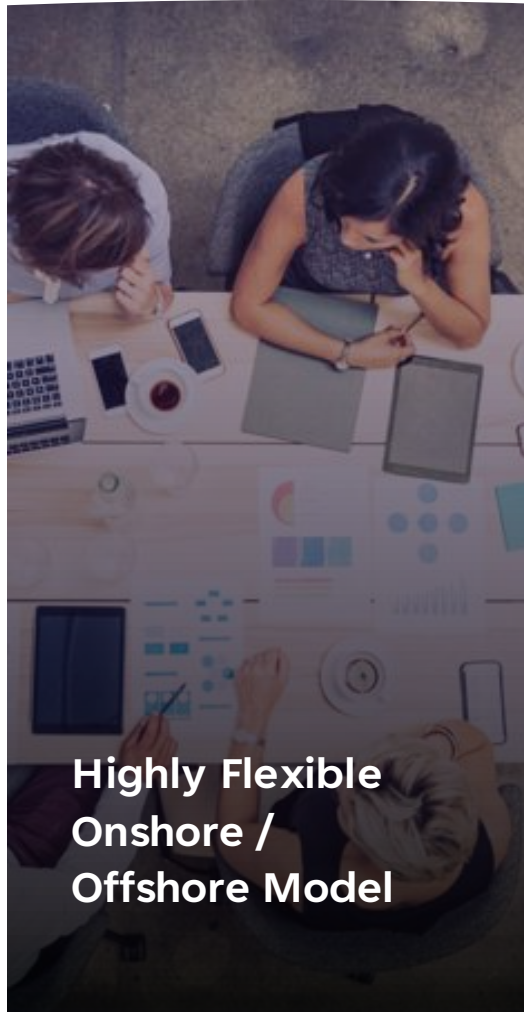
# Wipro, What makes us Different



Full Suite of Security Capabilities



Single Global Cyber Security Practice



Highly Flexible Onshore / Offshore Model



Strongly Aligned to Product Firms Across the Security Industry



Scale to Meet our Client's Needs



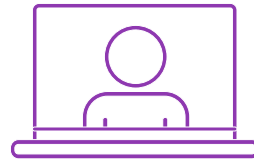
Wipro Invests in Critical IP, Robust Platforms, and Emerging Businesses

# The Increasing Burden on CISO's



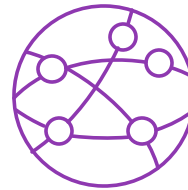
## Cyber Attacks

Ransomware, Malware, Supply Chain malicious Attacks continue to increase.



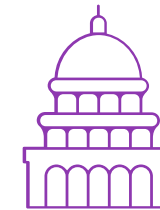
## Social Engineering

Social Engineering enhanced by AI becoming more capable and dangerous



## Data Sprawl

Growth, Proliferation, and Transient nature of data continues unabated



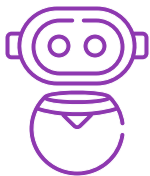
## Regulatory Complexity

Regulatory complexity continues to increase



## Growing Cost

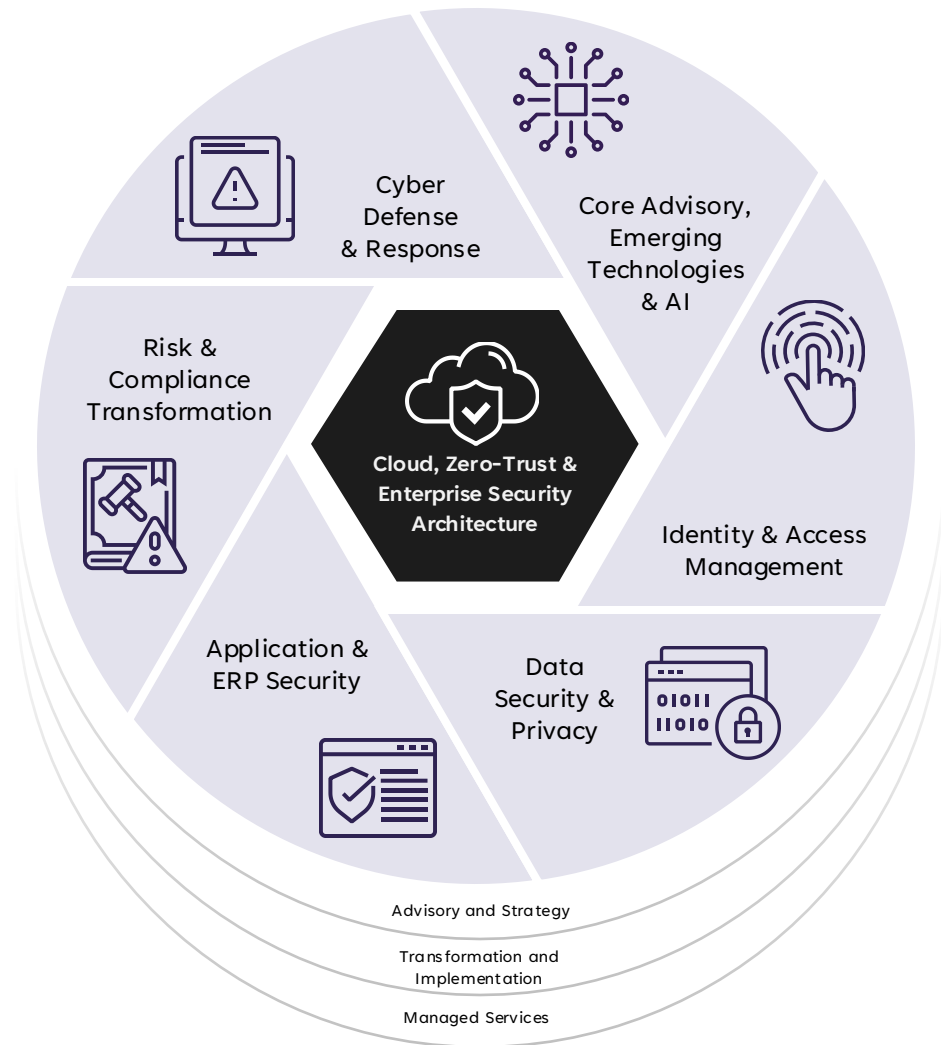
Increasing Costs to meet regulatory demands and secure the enterprise



## AI Challenges

Increasing growth of AI across disciplines, regions, entities, both good and bad, crates an uncertain landscape that offers both increasing risks and opportunities to enable the enterprise, which need to be understood, leveraged and managed.

# Transformative Solutions Through Comprehensive Capabilities.



Our plan, build, run capabilities can help secure your organization more efficiently and effectively. Our global team of professionals can accelerate your success with leading solutions powered by:

**500+**

Enterprise Clients across the globe

**50+**

Platforms, IP, Frameworks and Accelerators

**8**

Cyber Defense Centers

**8000+**

CyberSecurists

# Wipro, Cornerstone of the Security Marketplace



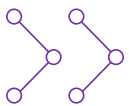
## 5 Strategic Platform Partners

Vigorous partnership with broadly capable security players aligning visions from strategy to technology



## 30 Strategic Partners

Deep partnerships with major security firms ensuring deep expertise and alignment on product roadmap



## 15+ Emerging Partners

Wipro invests and partners in emerging technology companies that address critical needs in the security market



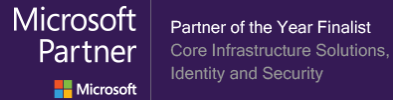
## 38 Capability Partners

Built leading capabilities in the strategy, design and delivery of leading security product vendors

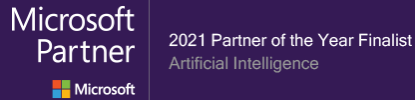




# Wipro CRS, A Recognized Leader



Partner of the Year Finalist  
Core Infrastructure Solutions,  
Identity and Security



2021 Partner of the Year Finalist  
Artificial Intelligence



Netskope - GSI Growth  
Partner 2024



Zscaler  
Americas Partner of the  
year 2024



Cyble  
GSI Partner of the  
year 2024



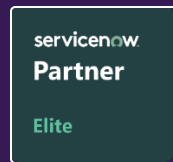
Wipro ranked as a **Leader** in  
Everest Group's  
**Cloud Security Services PEAK**  
Matrix® Assessment 2023



2021 Microsoft Partner of the Year  
Modernizing Applications



2020 Microsoft Partner of the Year  
Data Estate Modernization



## Gartner

Wipro Named a **Leader** in 2023  
Gartner® Magic Quadrant™ for  
**Managed Network Services,**  
Worldwide



**AWS Level 1 MSSP Specialization Distinctions**

- Modern Compute Security
- Managed Application Security Testing



Global –  
Security  
Specialization  
Partner



Global – Secure  
Application  
Development Part  
ner



Global Innovator GSI  
Partner  
1000+ Trained  
Professionals



Wipro's **CARG** solution won  
TMC's **Cloud Computing  
Security Excellence Award** for  
bringing innovations in area of  
Cloud Security - 2023



- Microsoft Advanced Specializations in Cloud, Identity, Threat and Data
- #1 Global GSI for Defender for Endpoint & Microsoft Info Protection
- Microsoft Intelligent SA Member



Wipro Named a **Leader** in  
Everest Group's **Identity and  
Access Management (IAM)**  
Services PEAK Matrix  
Assessment 2023

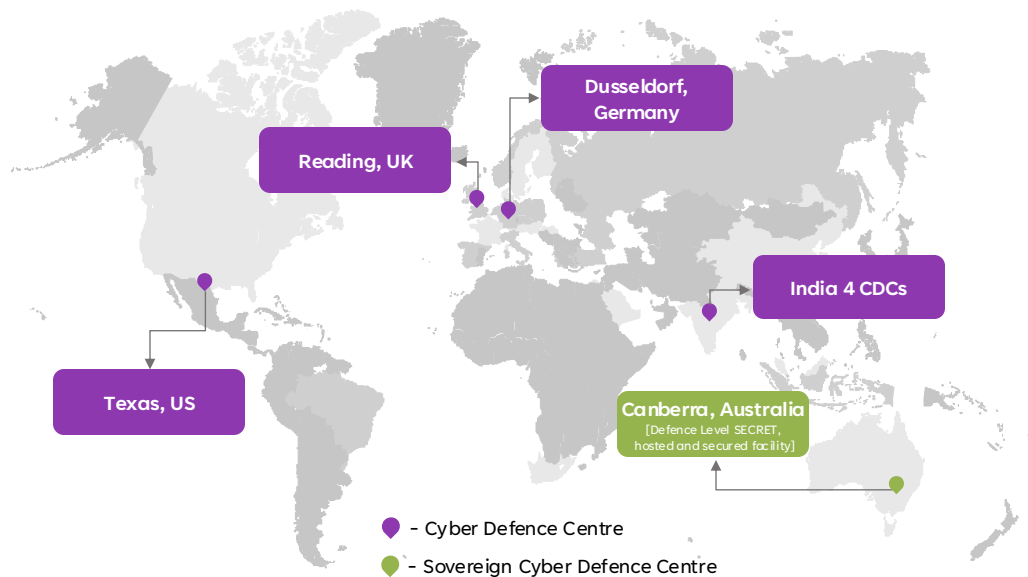
**20/20**

Microsoft Security  
System Integrator  
of the Year



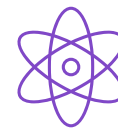
# Continuous Investments in Security Solutions

## 8 Cyber Defence Centre CDC



- 20+ Global Delivery Centers enable us to be ‘GloCal’
- ISO 27001 certified, SOC 2 (generic / customer specific)

## Examples of Wipro Built Solutions



**Intelligent Risk and Security**  
 Achieve continuous monitoring, enhanced visibility, and scalable security, all streamlined for the modern enterprise



**DeCentralized ID (DICE ID)**  
 Privacy preserving exchange of digital credentials



**Automated Regulatory Compliance (ARC)**  
 Enables faster time to value through automated compliance tracking



**Enterprise Data Obfuscation**  
 Enhances data security through intelligently masking sensitive data



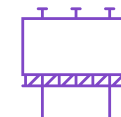
**Third Party Risk Management**  
 Automates the collection, validation and continuous monitoring of data



**Wipro Holmes**  
 Accelerates growth from cloud with AI solutions



**Cloud Applications Risk Governance**  
 Enables visibility into risk posture and governance of applications



**Security Management Center**  
 Identifies operational security risks across the business



**Identity Management Center**  
 Provides a single view of the Identity and Access Management ecosystem

# ArC - Automated Regulatory Compliance

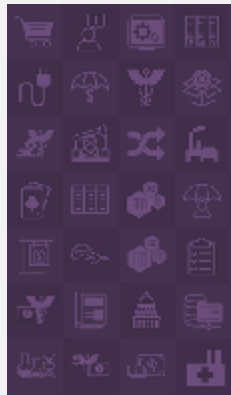


Our ArC Content Service is maintained by compliance specialists in PCI DSS, Sarbanes Oxley, FFIEC, GLBA, FRB Reg A-YY, HIPAA, Privacy, FDA, NERC CIP, and more.

ArC monitors federal regulatory amendments and state privacy laws, including state sources for personal information protection, security breaches, data sharing, identity theft, and notification.

ArC content is available for 20 industries through certified ServiceNow Store apps, and leverages a three-pronged compliance approach

Industry Aligned



- 1) **Updated Source Content Monitoring** — provides industry-specific harmonized laws and regulations updated on a quarterly basis, as well as an accompanying summary e-newsletter.
- 2) **Source Change Notifications** — provides update notifications for sources that are maintained and monitored by our ArC Content Team on a quarterly basis via a summary e-newsletter.
- 3) **Compliance Reporting** — provides audience specific reporting on a mandate-by-mandate basis; present your risk and compliance posture in the language and format each regulator, examiner and auditors expects and requires.

+850 Authority Documents  
+80,000 Citations

250 integrated Requirements

AI Source Highlights

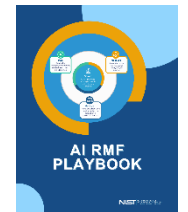


**NIST**  
National Institute of  
Standards and Technology

ISO/IEC 42001 Information  
Technology – Artificial  
intelligence – Management  
system



NIST Artificial Risk Management  
Framework (AI RMF 1.0)



NIST AI RMF  
Playbook



# Wipro's Fields of Play Driving Strategic Results

## CyberTransform<sup>SM</sup>



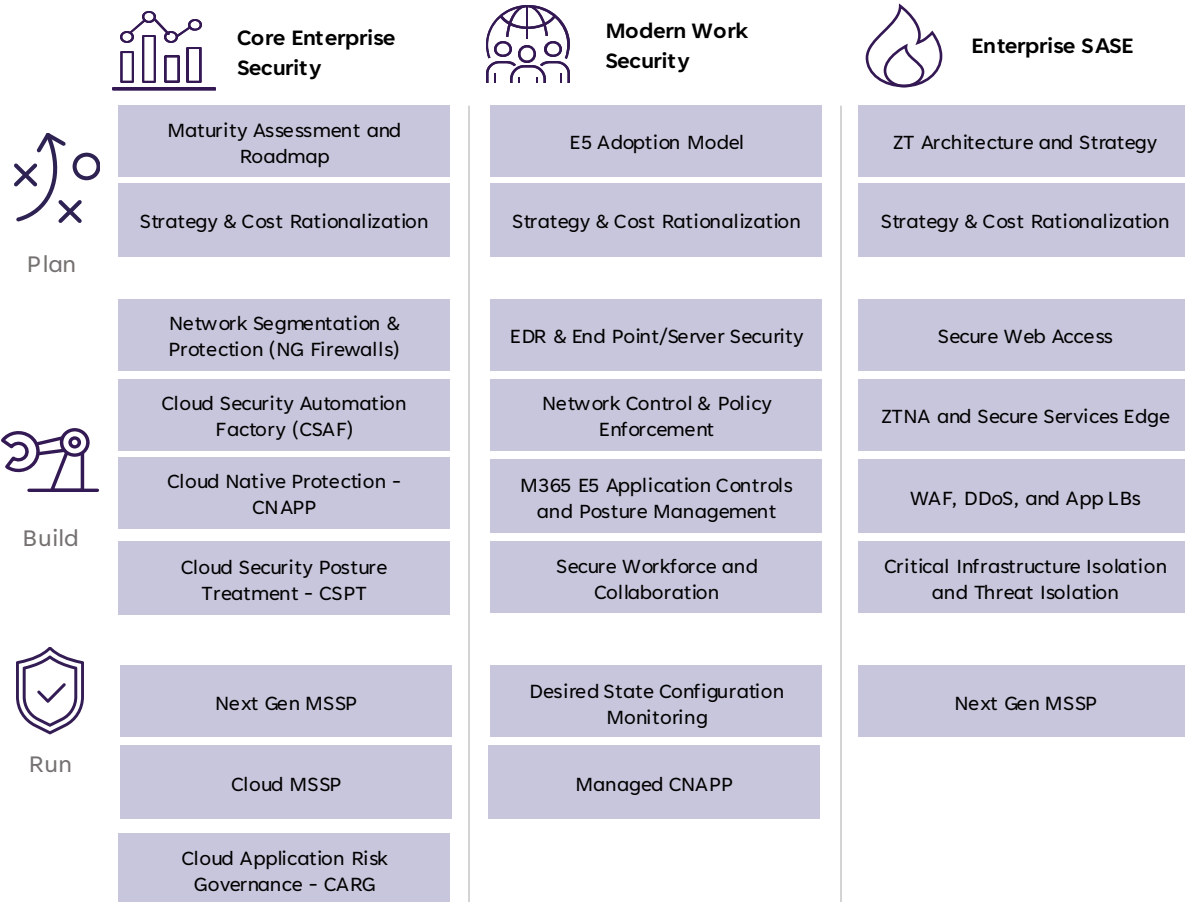
CyberTransform<sup>SM</sup> Field of Play solution components augment the three-pronged approach (Assessment, Strategy, and Transformation) through defined go-to-market offerings and solutions. These solutions are defined by our Consulting Packages, Quick Start Implementations, and Platform IP related offerings.

## CyberShield<sup>SM</sup>



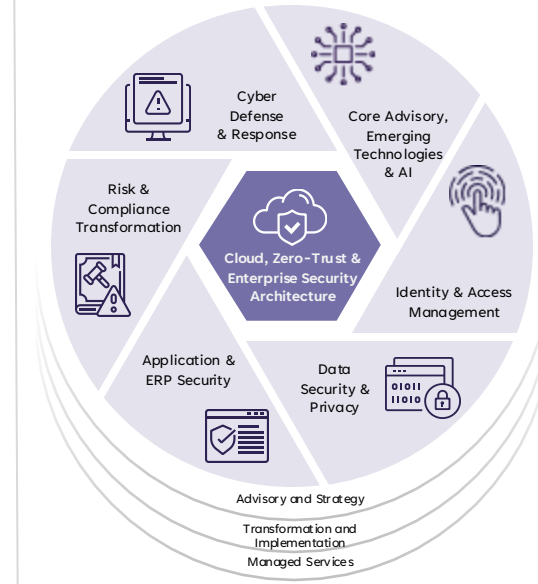
CyberShield<sup>SM</sup> Comprehensive cyber security managed services covering cloud, network, perimeter, endpoints, identity, data, OT and IoT, security monitoring, vulnerability and threat response using comprehensive technology management, Operational excellence, automation and AI.

# Cloud, Zero-Trust & Enterprise Security Architecture



## Differentiators

- Full coverage – Strategy to Managed Services
- Focus on strategic alignment within customers, grounded in business value and risk economics
- **Cloud Security Automation: 800+ Compliance as a Code (CaC), 250+ Policy as a Code (PaC), 65+ Security as a Code (SaC), 1200+ Cloud Control Checks**
- Different Wipro IP solutions to accelerate deployments & create better customer outcomes
- Risk and Compliance aligned cloud modernization and workload protection
- Key strategic partnerships and industry recognition



## Stats



**250+**

Enterprise Clients across the globe



**2500+**

Cloud Cybersecurist



**20+**

Security Academies

## Wipro Contacts

Angshuman Chattopadhyay

Bhaveshkumar Bhatt

Dean Fantham

## Partner Solution Technologies



# Core Advisory, Emerging Technologies & AI

## Strategy & Roadmap

## Governance Solutions & Target Operating Models

## Emerging Technology & AI



Plan

Security Consolidation & Optimization Strategy

NextGen Security Roadmap  
12 | 24 | 36- month

NextGen Compliance Assessment & Roadmap  
HIPAA | DORA | NIS2 | NIST

Enterprise Risk Management Program  
ERM

Operational Risk Management Program  
ORM

Information & Technology Risk Management Program  
IT

Compliance Management Program  
Refresh | Define

CISO Program Assessment  
(people, process, technology)

Governance Technology Enablement Roadmap

Software Supply Chain Assessment/Software Bill of Materials Practices

Governance Documents Policy | Standard | Procedure

Organizational Program Remit and Charter Refresh | Define

Stakeholder Alignment and Governance Model Refresh | Define

Metrics & Reporting External | Internal

Responsible AI Governance Strategy

Emergent Technology (i.e. NextGen, Blockchain) infrastructure Strategy

AI Controls and Framework Assessment

AI Governance & Assurance

AI Risk Management Program

AI Compliance (Security & Privacy) Management Program

AI Software Supply Chain Security Risk Strategy & Roadmap



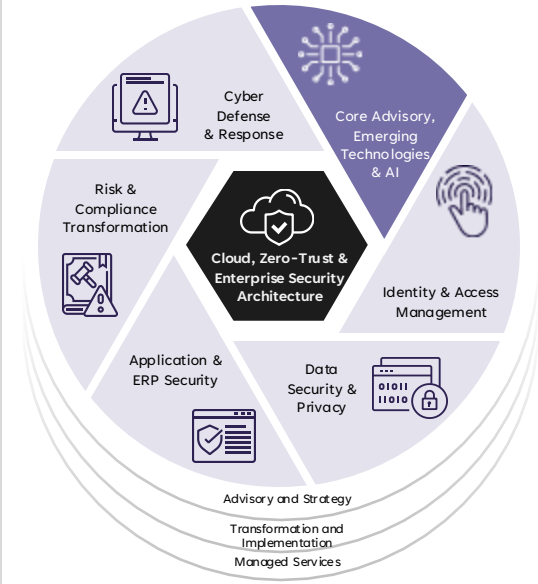
Build

## Differentiators

- Cyber X-Ray
- Quick Start Consulting Packages
- Executive/CISO Workshops
- AI Governance Workshops

## ARC-AI

- A Wipro Brand ServiceNow Store App with Expanded Use Case for Responsible AI
- 10+ Authoritative Sources with AI



## Stats



**20+**

Years Strategy & Risk Experience



**10+**

Industries with deep expertise



**60+**

Alliances & Partnerships

## Wipro Contacts

Peter Sweetland

## Partner Solution Technologies



# Identity & Access Management



## External Identities



## Internal Identities



## Identity Governance



Plan

Customer Identity & Access Management (CIAM) Capabilities Assessment  
Customer Identity and Access Management Technology Enablement Roadmap

Identity & Access Management capabilities assessment  
Identity & Access Management Technology Enablement Roadmap

Identity Governance & Administration (IGA) Capabilities Assessment  
Identity Governance & Administration (IGA) Technology Enablement Roadmap



Build

Authentication & Authorization | Multifactor Authentication MFA  
Single Sign On | Password-less Authentication Identity Provider IdP  
External Identities | B2B | B2C  
Dynamic Authorization | Just In Time Access JIT

Identity Life Cycle Management | Application Onboarding  
Role-based Access Control & Separation of Duties  
IAM Modernization | Cloud and Hybrid  
Service Desk Integration | Access Request Portal

Privileged Access Management Modernization | Cloud and Hybrid  
User Access Reviews  
Identity of Things  
ZeroTrust IAM | Identity Protection



Run

CIAM Functional Program Support  
CIAM Technical Solution Support

IAM Functional Program Support  
IAM Technical Solution Support

PAM & IGA Functional Program Support  
PAM & IGA Technical Solution Support

Consumer IAM Solution

Digital Identity Managed Security Services

Identity Governance & Administration as a service

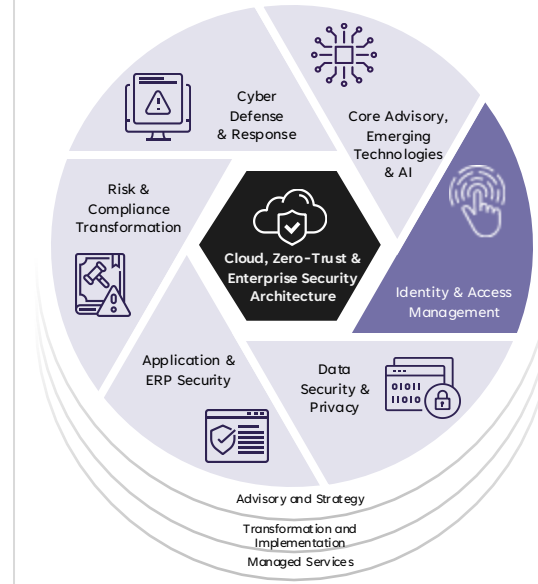
Identity Secure Threat Management

### Differentiators

- Wipro's Identity Management Center (IMC)
- Xx
- Xx
- Xx
- Xx
- Xx
- Xx

### Wipro's Identity Management Center (IMC)

- XXXX



### Stats



**3200+**  
IAM CyberSecurists



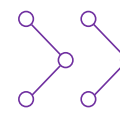
**385+**  
CRS IAM clients across the globe



**100 Mn+**  
Identities managed



**100K+**  
Applications & Systems secured



**3**  
Automation platforms and accelerators



**30+**  
Alliances and Partnerships

### Wipro Contacts

Paul Gagacki    Ashish Chandra

### Partner Solution Technologies



# Data Security & Privacy

 **Data Classification**

 **Data Protection**

 **Privacy**

 Plan

Data Classification  
Technology Enablement Roadmap

Data Classification Program  
Assessment | Refresh | Definition

Data Protection  
Technology Enablement Roadmap

Data Protection Program  
Assessment | Refresh | Definition

Privacy  
Technology Enablement Roadmap

Privacy Program  
Assessment | Refresh | Definition

 Build

Data Discovery

Data Classification &  
Enforcement

Data Governance &  
Regulatory Compliance

Data Loss Prevention  
& Insider Threat Protection

Tokenization

Public Key Infrastructure  
PKI

Certificate And Key Management

Digital Rights Management

Record Of Processing Activities  
Ropa

Privacy Screening / Threshold  
Assessment

Privacy Impact Assessments  
Data Privacy Impact Assessments  
Pia | Dpia

Data Subject Management /  
Data Subject Access Request  
DSAR

 Run

Data Classification  
Functional Program Support

Data Classification  
Technical Solution Support

Intelligent data command center

Data Protection  
Functional Program Support

Data Protection  
Technical Solution Support

Confidential Computing –  
Attestation Service

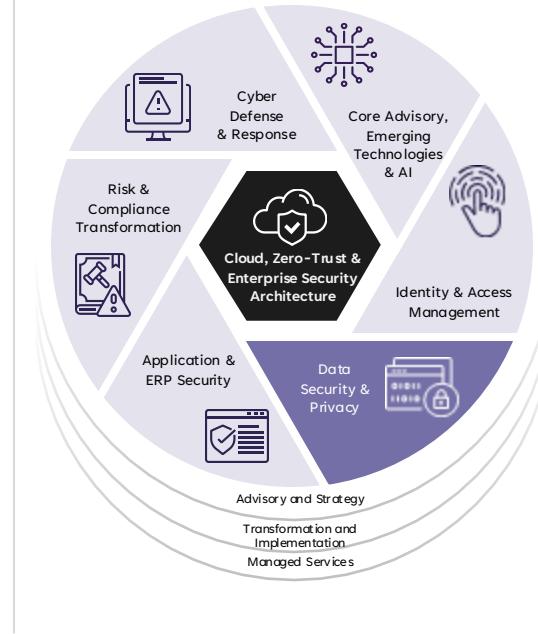
Privacy  
Functional Program Support

Privacy  
Technical Solution Support

Data Security Posture  
Management

## Differentiators

- Intelligent data command center – visibility of data
- Discover your shadow AI and adopt AI securely
- Reduce cost by identifying stale data in poly cloud
- Peace of mind when processing and sharing data
- Quantum Readiness
- Resiliency with our cyber vault solution



## Stats



**120+**

Global Customers



**600+**

Data Security Associates



**15+**

Data Security  
Technologies



**25+**

OEM Partnerships

## Wipro Contacts

Jay Dial

## Partner Solution Technologies





# Application & ERP Security



## Identity & Access Governance for SAP



## Enterprise Risk & Compliance for SAP



## Cybersecurity for SAP



Plan

- End-to-End or Hybrid SAP Landscape Security Architecture Design
- SAP Cybersecurity Product & Solution Recommendations and Roadmap Guidance

- Security Health Check Assessment and Roadmap
- Identity and Access Governance Roadmap

- SAP Security monitor and Auditing Capabilities Assessment
- SAP Security Performance Assessment



Build

- CIS Cloud Security for Public Cloud Provider Hardening for SAP Environment
- Access Design and Role Design / Redesign / Clean-Up for Business Process for P2P, R2R, H2H etc.
- Roles & Authorizations for SAP S/4HANA,
- Roles & Authorizations for SAP Fiori and SAP HANA Database

- SAP GRC Access Control, and Process Control,
- SAP Cloud IAS; IPS, IAG and SSO
- Integrated Risk Management for SAP through SAP GRC and Continuous Control Monitoring (CCM)
- SAP GRC Risk and Audit Management

- Vulnerability Management
- Threat Detection
- UI Data Masking & Data Security
- SAP-3rd Party Tool Integration Onapsis



Run

- Identity and Password Management
- Minor Enhancements, Application Development, and Application Delivery

- SAP GRC Administration, Support & Maintenance
- Emergency Access Management | User Recertification & Access Reviews

- Audit Reporting and Monitoring of ITGC Controls Sarbanes Oxley | SoD
- Service Request, Change Management, Incident Management & Problem Management

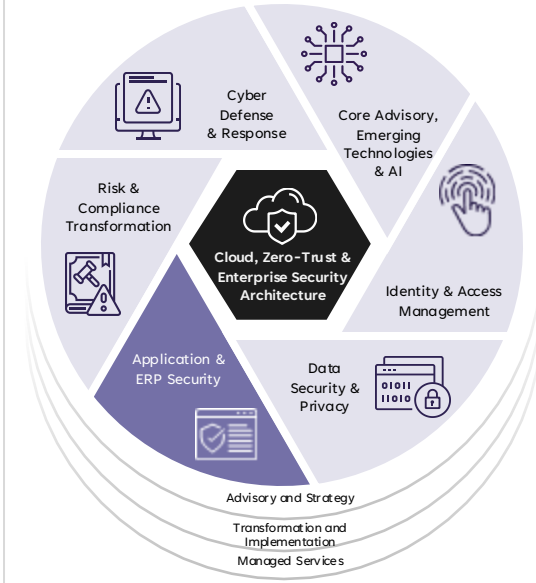
Secure Digital Workplace

Enterprise SASE

Enterprise Protection

### Differentiators

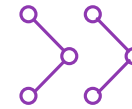
- End-to-end cybersecurity solutions for SAP application landscape
- Innovative technologies incorporating AI, automations, IPs, tools, and accelerators
- Tailored SAP cybersecurity solutions from assessment, advisory, transformations to managed services



### Stats



**400+**  
Enterprise Clients across the globe



**8+**  
Platforms, IP, Frameworks and Accelerators



**500+**  
SAP Security & GRC professionals



**40+**  
Security Academies



**25+**  
Years experience

### Wipro Contacts

Utpal Malla

### Partner Solution Technologies



# Risk & Compliance Transformation



## Integrated Risk Management (IRM)



## Third-Party Risk Management (TPRM)



## Business Continuity Management (BCM)



Plan

Compliance Technology Assessment
Risk Program Assessment   Refresh   Definition

Third-Party Coverage Assessment
Third-Party Program Assessment   Refresh   Definition

Operational Resiliency Readiness Assessment
BC-DR Architecture for Hybrid Cloud Assessment



Build

Policy Lifecycle and Exception Management
Risk & Compliance Management
Control Assurance & Continuous Monitoring
Issues & Remediation

Business Engagement Intake Process
Inherent Risk and Tiering
Vendor Corporate Security Program, Engagement Assessment and Continuous Monitoring
Issues & Remediation

Business Impact Analysis
Disaster Recovery
Business Continuity & Operational Resiliency
Exercise and Crisis Management



Run

Risk & Compliance Functional Program Support
Risk & Compliance Technical Solution Support

Third-Party Functional Program Support
Third-Party Technical Solution Support

BCM / DR Functional Program Support
BCM / DR Technical Solution Support

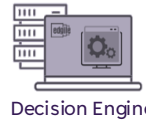
## Differentiators



- Monitors global laws and regulations
- over 850 authority documents
- 20 Industries
- 80,000 citations aligned to 250 integrated requirements



- Run with positive assurance to avoid audit fatigue
- Gather and store evidence securely, enabling an, “assess once, test once, satisfy many” approach to compliance

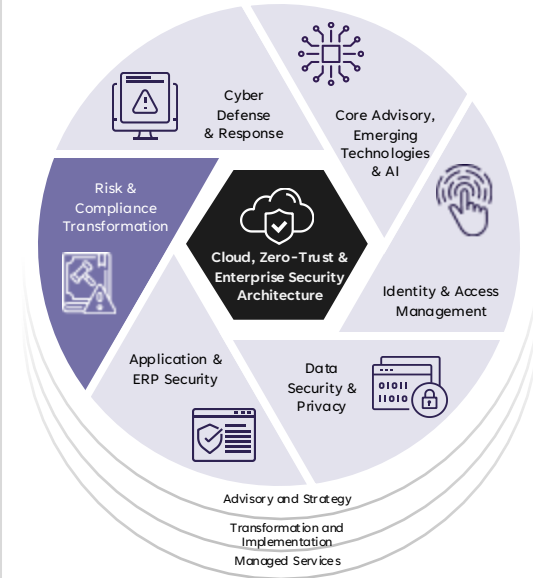


- Plan & Build it Right the First Time
- Scoring, ratings, and tasking based on smart questions for consistent governance results



Quick Start Accelerators

- Accelerating the implementation process
- Solution relevant *Quick Start* decision tracker aligned to User Acceptance Test Plans and configurations for quick time to value



## Stats



350+

ServiceNow Implementations



26

ServiceNow Certified Store Apps



10+

Quick Start Accelerators



250+

ServiceNow Certified SMEs

60+

Archer Certified SMEs

## Wipro Contacts

Barb Johnson Hunter Freeman

## Partner Solution Technologies



# Cyber Defense & Response

## Security Incident & Analytics

Security Incident & Analytics Technology Enablement Roadmap

Security Incident & Analytics Consolidation and Optimization Strategy

Security Information & Event Management SIEM

Security Orchestration Automation & Response SOAR

Security Incident Case Management

Threat Intelligence

AI for Security Workflows

Security Incident & Analytics Functional Program Support

Technical Solution Support

Threat & Vulnerability Solution Overview

## Attack Surface Management

Attack Surface Management Technology Enablement Roadmap

Attack Surface Management Consolidation and Optimization Strategy

Vulnerability Scanning Management (Detection) Application | Infrastructure | Container

SaaS Posture Management

Vulnerability Management Workflows (Triage) Application | Infrastructure | Container

External Attack Surface Monitoring EASM

Cloud Native Application Protection Platform CNAPP

Case Management for Vulnerability Response Workflows

Extended Detection and Response XDR

Security Posture Control (ASM Coverage)

Functional Program Support Penetration Testing

Functional Program Support Vulnerability Management

Technical Solution Support

AI Powered DevSecOps

Penetration Testing and Red Teaming

## Operational Technology Management

Operational Technology Enablement Roadmap

OT Asset Management Strategy

OT Asset Management Discovery | CMDB

OT Vulnerability Response Detection | Triage

OT Service Management Incident | Change

Functional Program Support

Technical Solution Support

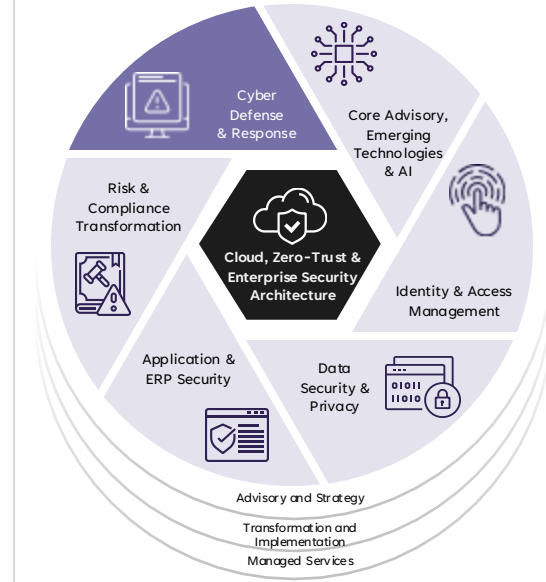
Exposure Management

## Differentiators

- 80+ Accelerators
- Xx
- Xx
- Xx
- Xx
- Xx
- Xx



Accreditation



## Stats

**108+**  
Customers

**600+**  
Security Professionals

**3**  
Awards

## Wipro Contacts

Jerald Carter   Ryan Anschutz   Rich Greco

## Partner Solution Technologies



Plan



Build



Run

# CRS Offerings

## CIRT



### Proactive Advisory



### Reactive Advisory



### Steady-State Operational



Plan

Critical Incident Response Enablement Roadmap
Critical Incident Response Organizational Strategy

Critical Incident Response Enablement Roadmap
Critical Incident Response Organizational Strategy

Critical Incident Response Baseline Management
Critical Incident Response Organizational Strategy



Build

Compromise Assessment: Cloud & Endpoint
Tabletop and Purple Team Exercises
Threat Intelligence Led Use Case Optimization
IR Plan / Playbook

Critical Incident Response Functional and Technical Onboarding
Digital Forensic   Log Analysis   Malware Analysis/Reverse Engineering
Deep/Dark Web Onboarding/Monitoring
Crisis Management and Executive Reporting

Critical Incident Response Team Integration
Compromise Assessment Health Check
Advanced Threat Hunting   Threat Intelligence
SOC Optimization



Run

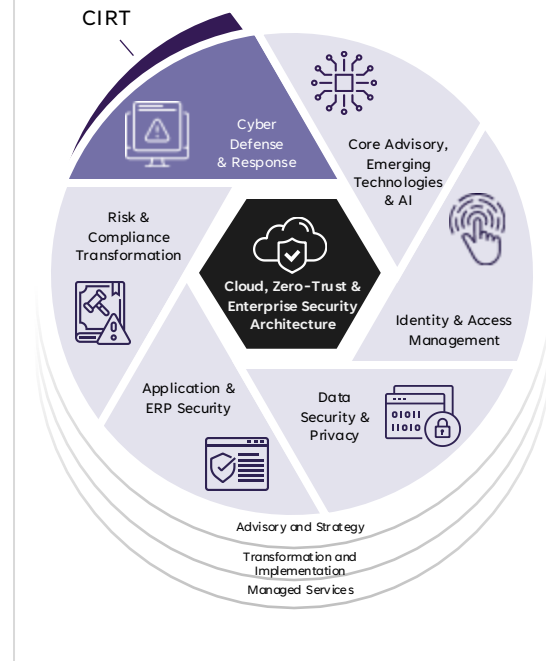
Critical Incident Proactive Functional Support
Critical Incident Proactive Technical Support
MDR as a Service - using Wipro's CyberShield XDR Platform

Critical Incident Response Reactive Functional Support
Critical Incident Reactive Technical Support
MDR using Open XDR Framework - Client owned platforms

Critical Incident Response Steady-State Functional Support
Critical Incident Response Steady-State Technical Support
MDR using EDR/NDR/XDR Platforms

### Differentiators

- XX
- XX
- XX
- XX
- XX
- XX
- XX



### Stats



**250+**  
Global Customers



**1500+**  
Professionals



**12**  
Cyber Defense Centers (CDCs) Globally



**25%**  
Nearshore Coverage (US, UK, EU, APAC, MEA)

### Wipro Contacts

Jerald Carter   Ryan Anschutz   Rich Greco

### Partner Solution Technologies



# Next Steps



# Wipro, What makes us Different



Single Global  
Cyber Security  
Practice



Full Suite of  
Security  
Capabilities



Scale to Meet  
our Client's  
Needs



Strongly Aligned to  
Product Firms Across  
the Security Industry



Wipro Invests in  
Critical IP, Robust  
Platforms, and  
Emerging Businesses

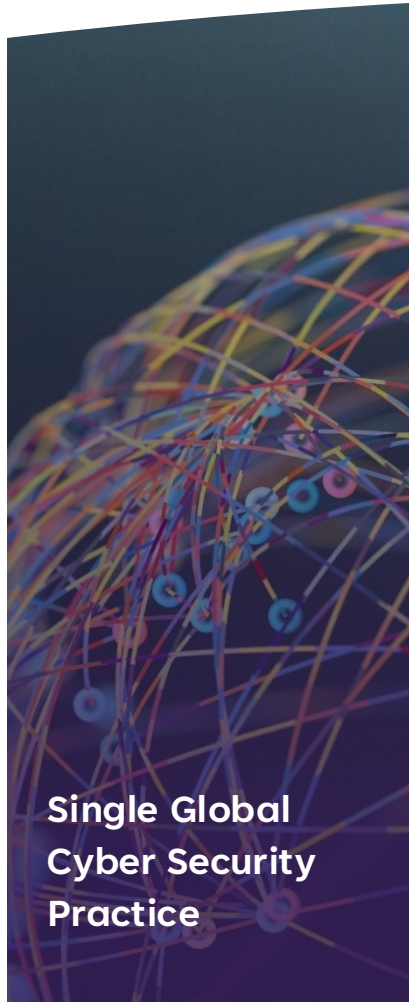


Highly Flexible  
Onshore /  
Offshore Model

# Wipro, What makes us Different.



Full Suite of  
Security  
Capabilities



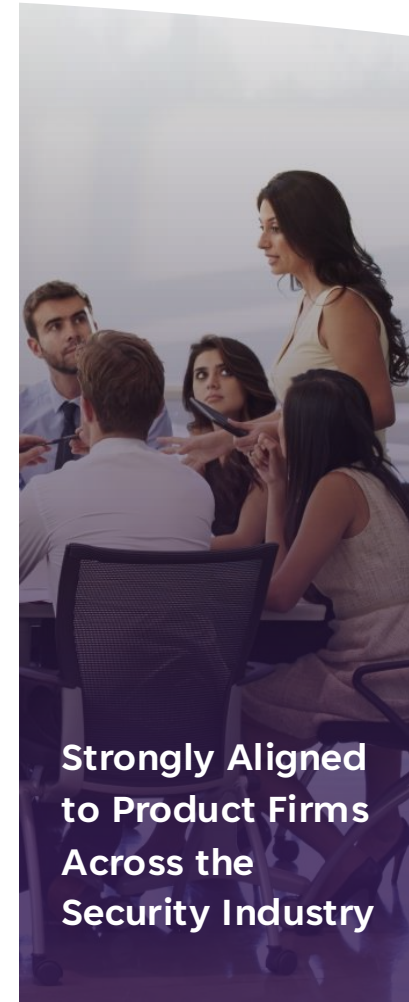
Single Global  
Cyber Security  
Practice



Highly Flexible  
Onshore /  
Offshore Model



Wipro Invests  
in Critical  
IP, Robust  
Platforms,  
and Emerging  
Businesses



Strongly Aligned  
to Product Firms  
Across the  
Security Industry



Scale to Meet  
our Client's  
Needs

# Wipro, What makes us Different



Single Global Cyber Security Practice



Full Suite of Security Capabilities



Scale to Meet our Client's Needs



Strongly Aligned to Product Firms Across the Security Industry



Wipro Invests in Critical IP, Robust Platforms, and Emerging Businesses



Highly Flexible Onshore / Offshore Model

# Numbers

## 74% of survey respondents

agree that AI-powered cyber threats are having a significant impact on their organizations. However, 60% of respondents fear that their organizations are not adequately prepared to defend against AI-powered threats and attacks. (Darktrace 2024)

<https://darktrace.com/blog/the-state-of-ai-in-cybersecurity-unveiling-global-insights-from-1-800-security-practitioners>

## 3661 incidents

in 2024 (Email Fraud) (Verizon DBIR 2024)

## Cybercrime

was up **67%** compared to 2022 (CrowdStrike GTR 2023)

## 25% of executives

include security and privacy features into services and relationships. (PWC)

<https://www.pwc.com/us/en/executive-leadership-hub/ciso.html>

## 23% of organizations

reported fines/sanctions due to regulations from cyberattacks. (SOCR 2023)

## 50% of attacks

targeted credentials (Verizon DBIR 2024)

## Ransomware

remains a top threat across **92%** of Industries (DBIR 2024)

## Only 2%

of organizations are keeping in line with nine cybersecurity best practices. (PWC)

<https://www.pwc.com/us/en/executive-leadership-hub/ciso.html>

## Regulatory mandates

increasing year over year (IBM X-Force Threat Intelligence Index 2024)